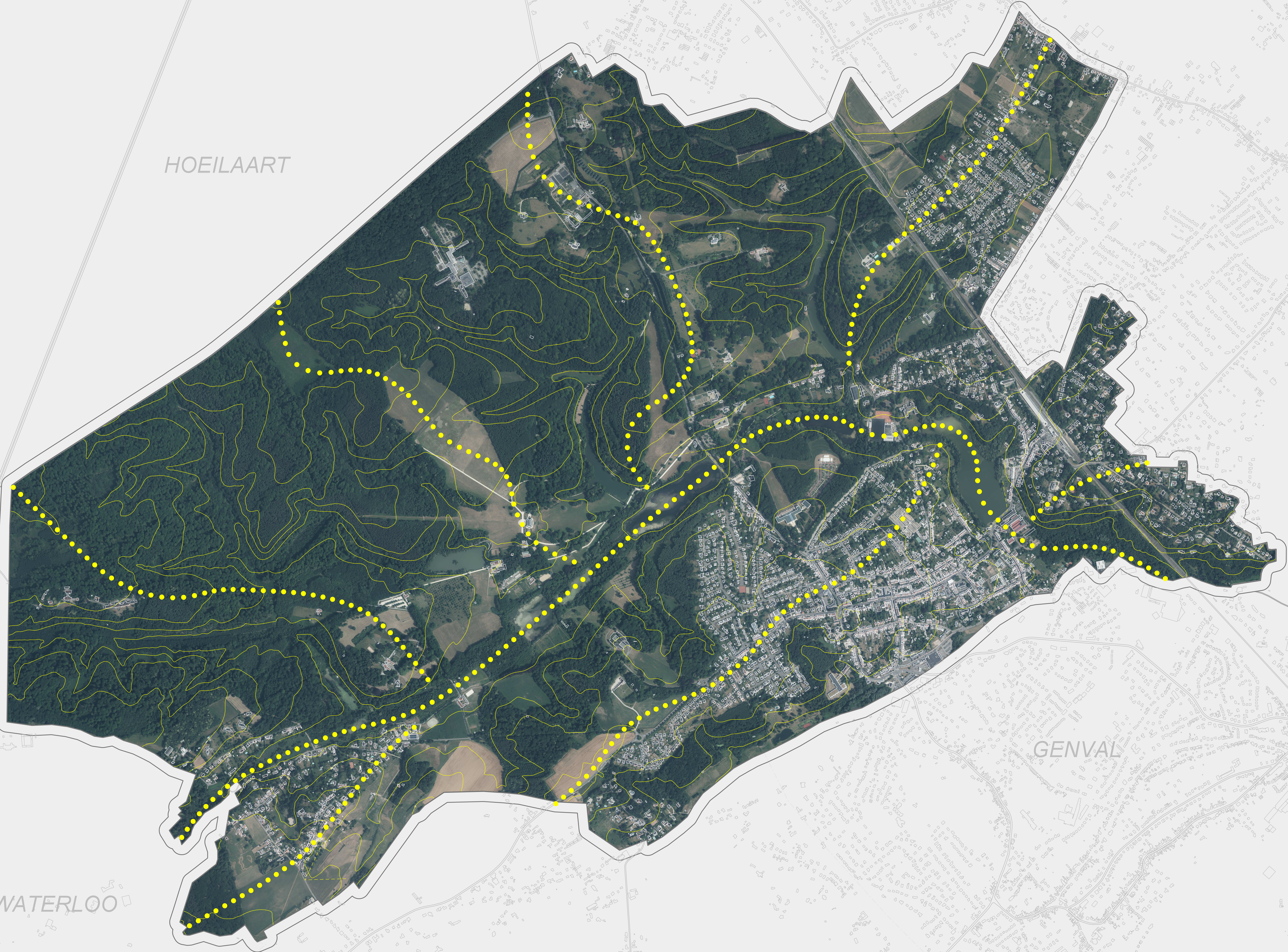


REGION FLAMANDE

HOEILAART

OVERIJSE

0 100 500
SDC Commune de La Hulpe - Aménagement sc: 2019



GENVAL

WATERLOO

LASNE

WALLONIE



Wallonie 
COMMUNE DE LA HULPE 
*Révision du Schéma de Structure Communal
"Schéma de Développement Communal"*
Situation existante **DRAFT**

*Environnement :
Paysage*


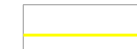
UNITES PAYSAGERES

-  limites d'unités
-  relief



SCENOGRAPHIES PAYSAGERES

-  cheminement majeur
-  perspective

ELEMENTS PAYSAGERES

-  bâti
-  non bâti

VUES

-  points de vue
-  prise de vue